

## Information & Rules

Property: 114 acres

Main Trail: 1.27 miles (Red)

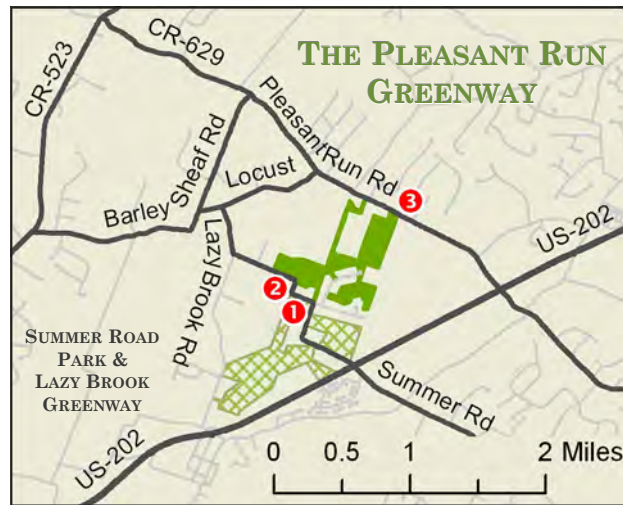
Alternate Trail: 1.45 miles (Yellow loops)

Difficulty: Moderate (stream fords)

- Trails are open to the public daily, from dawn until dusk.
- Trails are marked at frequent intervals with colored blazes (diamond markers).



- Stay on the marked trails, many are adjacent to private property.
- The trails include *fords* (stream crossings), passable on stepping stones. These areas may flood after rainfall and crossing should not be attempted when waters are high.
- Leave only footprints and take only photographs. Carry out all trash, and do not disturb wildlife, vegetation or property.
- **No motorized vehicles are permitted** including ATV's, dirt bikes or snowmobiles.
- **Hunting is not allowed**, however portions of the trail system are adjacent to private property where hunting does take place in season. Observe caution when hiking in fall and winter and **wear blaze orange** or other bright colors.
- Horses may be startled easily by your sudden appearance, quick or silent approach. **Hikers should yield to horses on the trail.** While still at a distance slow down, make yourself known and move aside to let the horse and rider pass.



The main trailhead **1** is on Summer Rd., a short distance northwest of its intersection with US-202. A second trailhead is at **2**. Nearby are Summer Road Park and the Lazy Brook Greenway.

The Pleasant Run Road trailhead **3** is accessible from US-202 South or County Road 523.

This trail system is a result of the combined efforts of many individual volunteer citizens, the Readington Trail Association and the Boy Scouts of Troop 1969, Stanton. Maintenance is assisted through Readington's Adopt-a-Trail volunteers, including the Cub Scouts of Pack 182 in Three Bridges and the families of several neighboring property owners.

**For questions, to report problems or to volunteer to help with the Readington Recreational Trails Program please contact the Readington Recreation Department at (908) 534-9752.**

Information about other recreational trail systems in Readington is available at:

[www.ReadingtonTwp.org](http://www.ReadingtonTwp.org)  
Recreational Trails

## THE PLEASANT RUN GREENWAY



Self Guided Hiking



Horseback



Readington Township Open Space  
Advisory Board

Readington Recreation Department



**Township of Readington**

Hunterdon County • New Jersey

509 County Road 523  
Whitehouse Station, NJ 08889

[www.ReadingtonTwp.org](http://www.ReadingtonTwp.org)  
Recreational Trails

# THE PLEASANT RUN GREENWAY

The trails traverse open fields, a cedar forest and woodlands as they meander toward the Pleasant Run.

An easy loop at the south end circles an open field and can be enjoyed by all. The main trail continues northward through a cedar forest and then along the bank of a tributary feeding into Pleasant Run. From a ford (stream crossing) the trail climbs to the central field loop.

The unique access to clear streams along the trails offers an opportunity to observe water dwellers such as this crayfish.



The trail along the northern edge of the central field traverses a ridge that offers a view into the canopy of the forest beyond. Nesting red-tail hawks, raising chicks, have been observed from this vantage point.

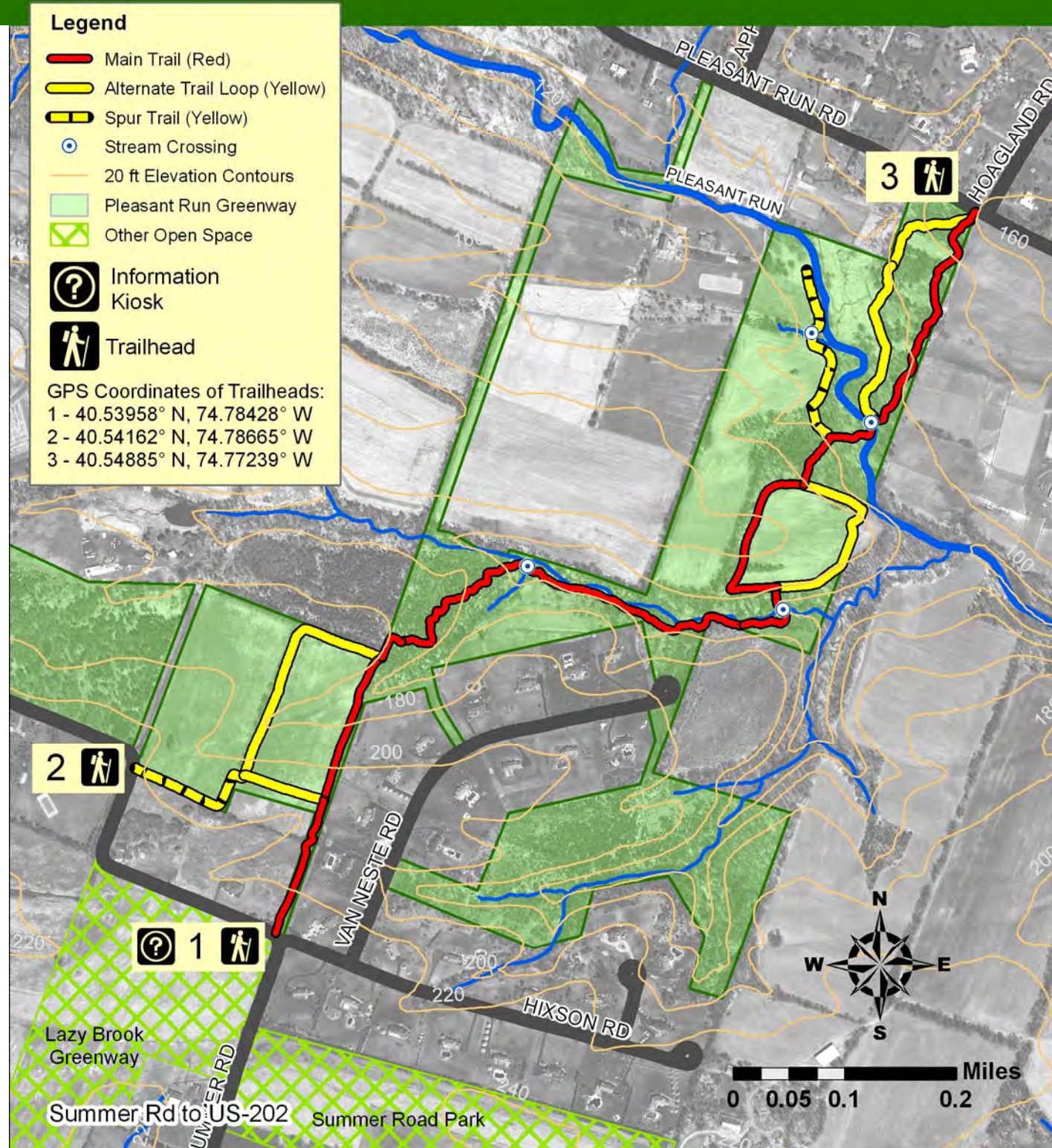


The trail descends through the woods with a spur trail branching off and running along the south bank of the Pleasant Run through an open floodplain that was planted with over 100 native trees and shrubs in 2007.

The main trail continues to a picturesque crossing of the Pleasant Run and a loop through woodlands to the northern access point 3 at Pleasant Run Road.

The main trail continues to a picturesque crossing of the Pleasant Run and a loop through woodlands to the northern access point 3 at Pleasant Run Road.

Wildlife photos courtesy of Bruce Michael



# Directions to Pleasant Run Greenway – Northern Trailhead

Across from Intersection of Pleasant Run Rd. (Route 629) and Hoagland Rd.

For GPS use Flemington, NJ 08822

- From US 202 Southbound: turn Right at the sign for STANTON on to County Road 629. Go 1 mile to intersection with Hoagland Rd on right. Park on Hoagland
- From US. 22 in Whitehouse Station, take County Road 523 South 3.9 mi; Turn left on to Pleasant Run Rd. Go 2.5 miles, passing Apple Tree Rd, and turn left at next intersection on to Hoagland. Park on Hoagland.
- From Three Bridges: EITHER Cross Route 202 at River Ave, then turn right and take Lazy Brook Rd 1.7 miles to Locust; OR at the light on Rt. 202 at the Wawa store, take Summer Rd west 1.5 miles, turn right at Lazy Brook Rd, and go to the stop sign at Locust.

Turn right on Locust, then right again at the next stop sign on Pleasant Run Rd. Take Pleasant Run Rd .7 mile to intersection of Hoagland on the left. Park on Hoagland.

